

Buffer tank

Buffer tanks are conceived to regulate water at the entrance of water treatment plants.



These tanks are mainly settled upstream a water treatment plant and must resist to every effluent, even the most corrosive. Otherwise, the water treatment plant will not be efficient.

In order to assure the function of the tank, it is recommended to aerate and to brew them for diverse reasons:

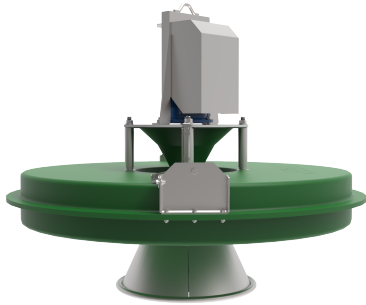
- To control odors: when your waste waters are stocked into a non-aerated pond, the process of biological fermentation starts and bad smells appear because of stagnant waters.
- To regulate the incoming effluent: the brewing made by our aerators is necessary to homogenize the incoming effluent. The entering water will be controlled when it comes into the pond.
- Durability of your tanks: into the buffer tanks, the suspended matters use to decant leading to important deposits into the water treatment plants.



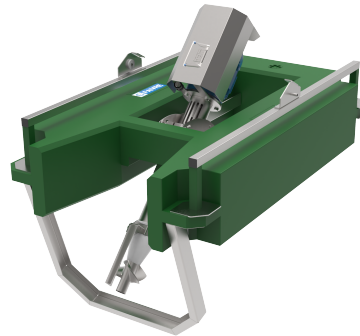
Buffer tank in a textile industry (5 HYDROPULSE 4kW)

The installation of our machines will guarantee the maintenance and so the durability of your storage ponds.

To assure the aeration and the movement of the effluents into the buffer tanks, the fast turbine aerator FLOPULSE and the hydro-ejector with a vacuum turbine HYDROPULSE are ideal.



Representation of FLOPULSE



Representation of HYDROPULSE