

FAIVRE
INDUSTRIE
ENVIRONNEMENT



FLOPULSE



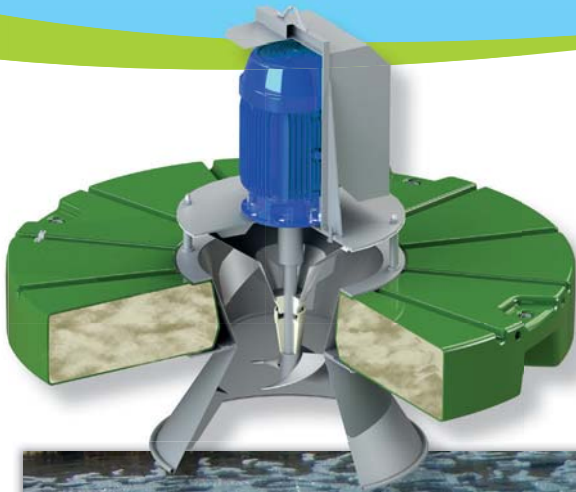
**60 YEARS
OF EXPERIENCE
IN VENTILATION**

+ 33 3 81 84 01 32

www.faivre-environnement.fr



AERATOR / FLOPULSE



LOPULSE is a rapid turbine aerator, it accelerates the process of biodegradation of organic matter, eliminates odours, avoids stratification of all effluents or bodies of water.

AIVRE has developed this range of 1.5 to 22kW to generate a powerful brewing in large lagoons and basins. With an oxygen supply of 1.2kg per kWh, our aerators offer a significant yield.

**RAW SPECIFIC OXYGEN
CONTRIBUTION:
1.2 kg O₂/kWh**



Flopulse 11kW in a leachate lagoon

OPERATIONS:

The specially designed propeller projects the wastewater on a cone for dispersing it into the atmosphere in a regular corolla. The wastewater then enjoys optimum contact with the atmosphere which leads to a significant transfer of Gas-CO₂/Oxygen. When the oxygenated liquid falls into the basin, it creates a circular current with a wide radius.

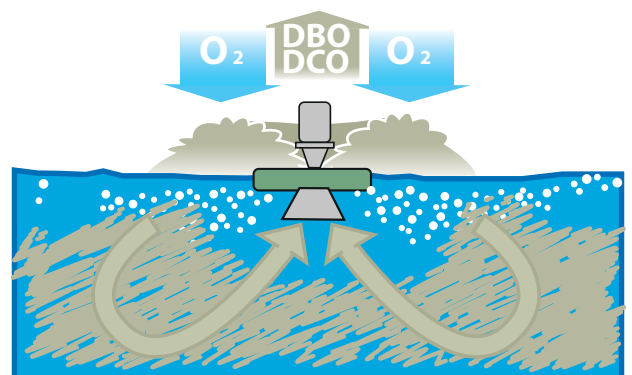
Result: the liquid mass benefits from a continuous supply of oxygen.

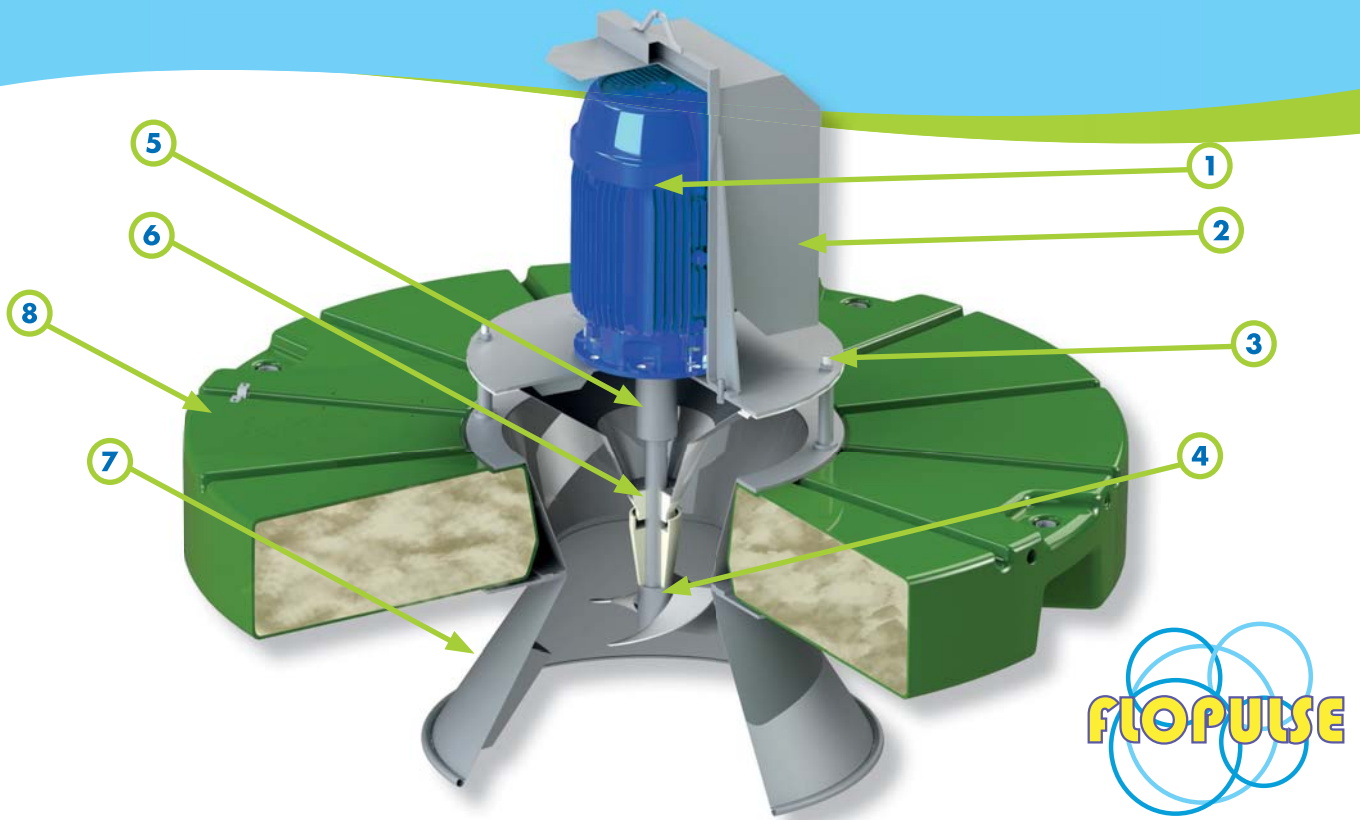
FLOPULSE est utilisé dans de nombreux cas :

- All loaded liquid wastewater,
- Cooling of waste water in the food industry,
- Lagooning of cheese industries, wineries, paper mills ...
- Municipal aerated lagoons,
- Leachate aeration,
- Aeration of pig and sheep slurry,
- Aeration of water reserves ...

Technical and economic advantages:

- ✓ Compact, transportable unit,
- ✓ very simple and inexpensive installation,
- ✓ no level adjustment (unit),
- ✓ no maintenance (no greasing).
- ✓ Quality materials and components.





DESCRIPTION:

- ① Engine IP 55 1500 t/mn.
- ② Engine cover in stainless steel AISI 316L.
- ③ Air mixer diffuser cone in stainless steel AISI 316L.
- ④ 3 blade propeller in stainless steel AISI 316L.
- ⑤ Stainless steel coupling sleeve AISI 316L.
- ⑥ Transmission shaft in stainless steel AISI 316L.
- ⑦ Suction cone in stainless steel AISI 316L.
- ⑧ PU foamed polyester float or rotation-moulded PE

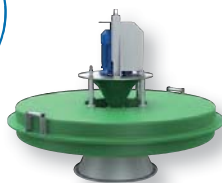
Each unit comes with 30 meters of submersible cable, extra length on request.

FLOPULSE >		2cv	3cv	4cv	5,5cv	7cv	10cv	15cv	20cv	30cv
Power output	kW	1,5	2,2	3	4	5,5	7,5	11	15	22
Volume of water processed ≈	m ³ /h	380	480	600	800	900	950	1500	2000	2400
Production of water (clear water) ≈	kg-O ₂ /h	1,71	2,56	3,56	4,75	6,17	8,83	13	17,7	26,12
Average spray height ≈	m	0,5	0,5	0,5	0,5	0,55	0,8	0,8	0,8	0,8
Average spray diameter ≈	m	3	3,5	4	5	5	6	6	8	8
Weight ≈	kg	78	88	140	140	160	210	250	330	350
References* 3x400v phase / 50 hz		AIF0203	AIF0203	AIF0403	AIF0503	AIF0703	AIF1003	AIF1503	AIF2003	AIF3003

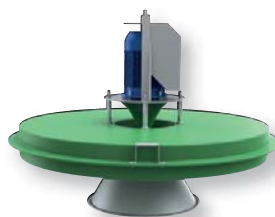
*Other voltages available on request



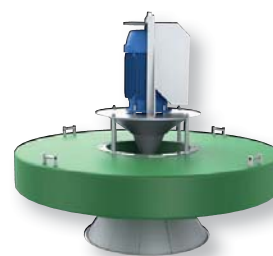
Flopulse 22 kW in a basin



Range 1,5 at 4kW



Range 5,5 at 7,5kW



Range 11 at 22kW



FAIVRE Group
7, rue de l'industrie
25110 BAUME-LES-DAMES
France



Tel: 03 81 84 01 32



info@faivre-indus.com



www.faivre-environnement.fr

EXCLUSIVE RESELLER:

